

V-cello

Carl Philipp Emanuel

BACH

**MAGNIFICAT**

# 1. Magnificat

Carl Philipp Emanuel BACH  
(1714-1788)

**Allegro**

*f*



4



7



10



13



16



19



1



25



28



31



34



37



40



43



46



2



52



55



58



62



65



68



71



74



3



80



83



86



89



92

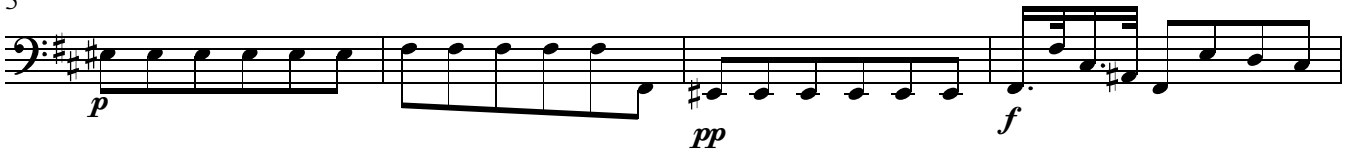


## 2. Quia respexit

Andante



5



9



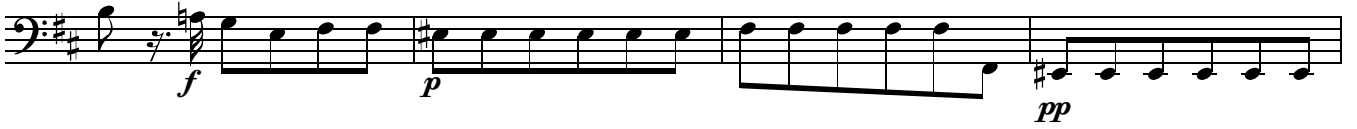
11



4



18



22



25



29



33



37



41

5



45



49



53



57



61



64



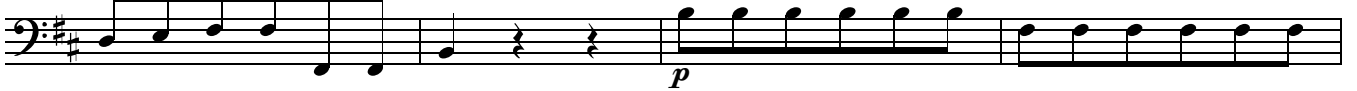
69



73



76



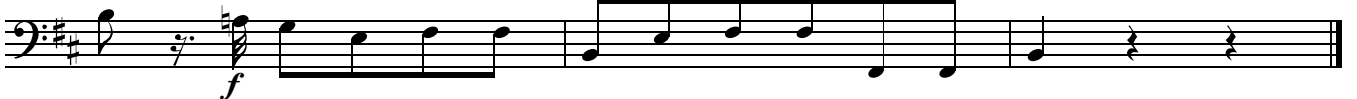
80



83

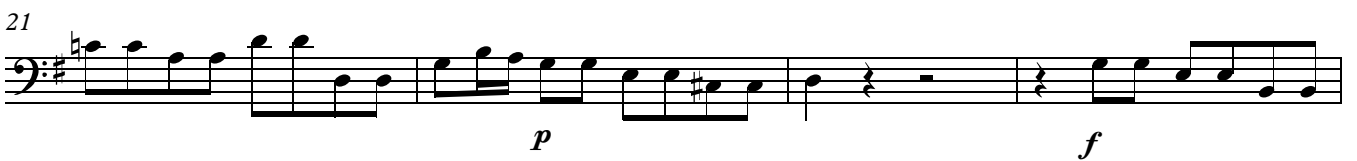
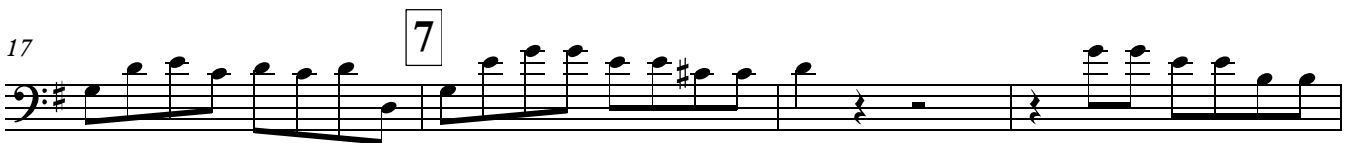


86



### 3. Quia fecit

**Allegro assai**





28



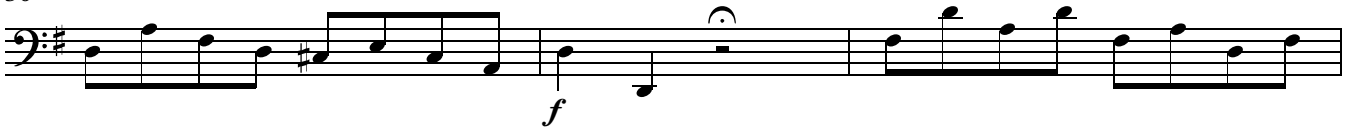
31



34



36



39



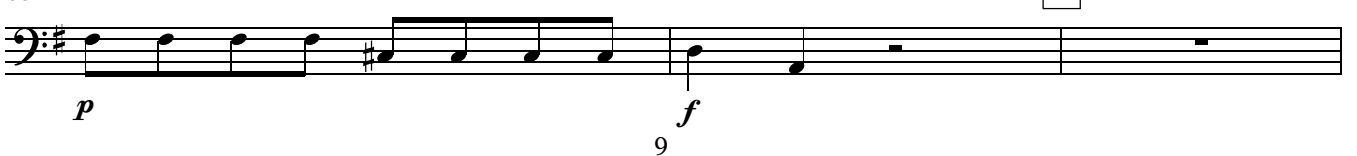
42



45



48



51



55



59



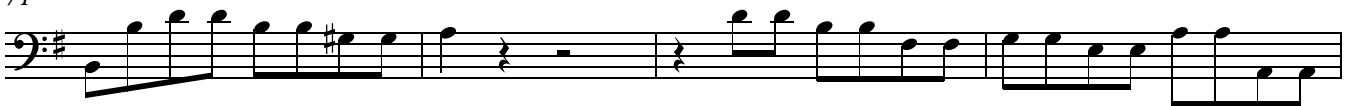
63



67



71



75



79



83



87



91



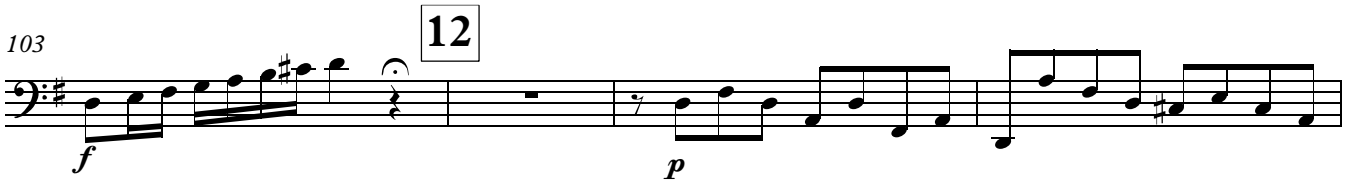
95



99



103



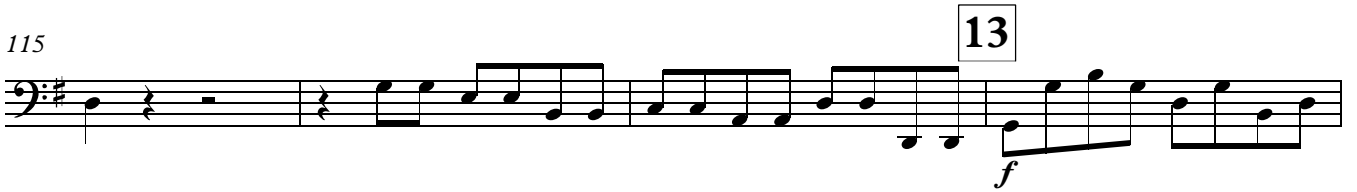
107



111



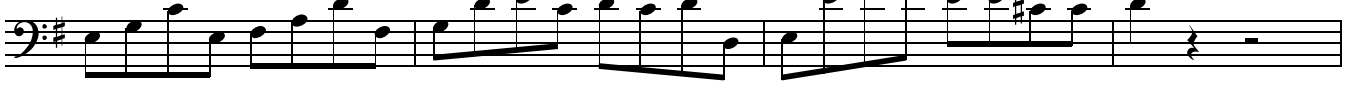
115



119



123



127

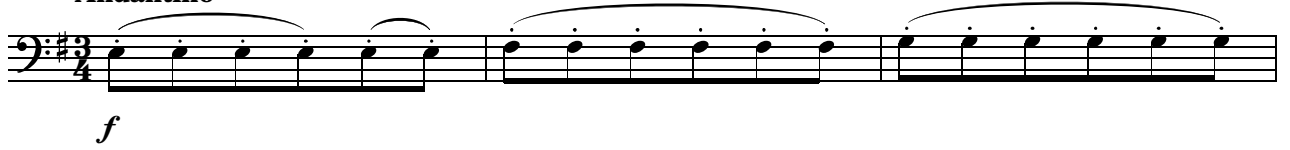


130

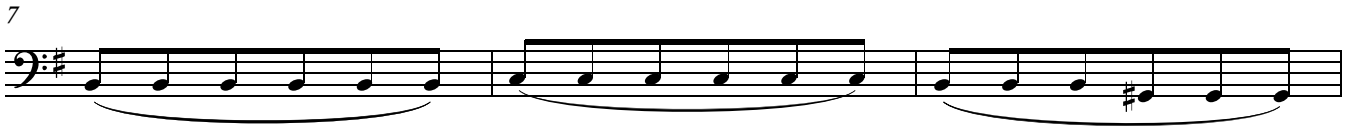


## 4. Et misericordia ejus

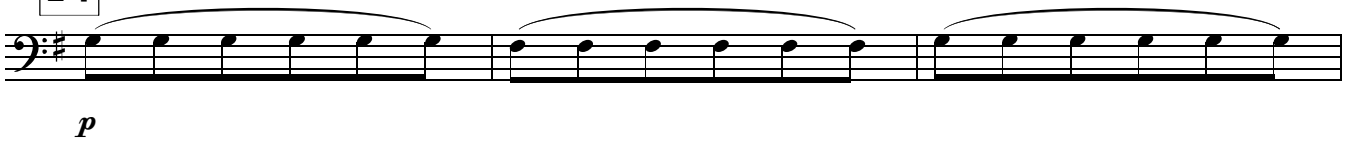
Andantino



4 simile



14



26

29

32

35

38

15

*f*

41

44

3

C.Ph.E.Bach. Magnificat  
V-cello

50

53

16

*p*

61

65

69

73

77

81

17

*f*

89

93

98

103

107

111

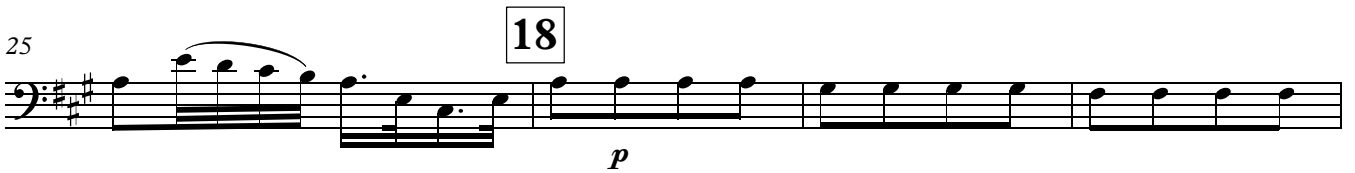
115

119

123

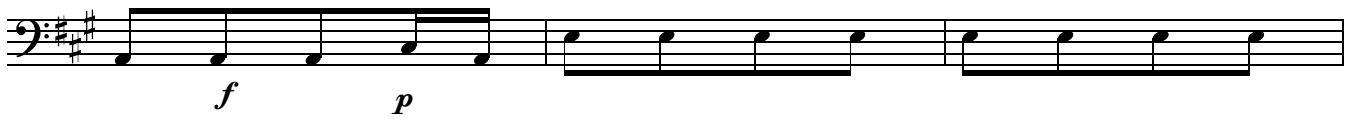
## 5. Fecit potentiam

**Allegro**





33



36

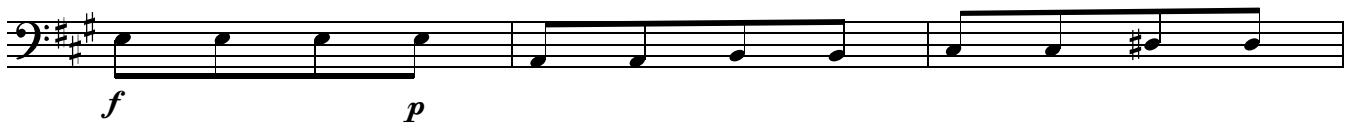


19

39



42



45



48



52

20

Musical staff 52, bass clef, key signature of three sharps (F#, C#, G#). The staff begins with a fermata over a half note G2, followed by a dynamic marking *p*. The melody consists of quarter notes: G2, A2, B2, C3, D3, E3, F#3, G#3, A3, B3, C4, D4, E4, F#4, G4, A4, B4, C5.

56

Musical staff 56, bass clef, key signature of three sharps. The staff begins with a fermata over a half note G2, followed by a dynamic marking *p*. The melody consists of quarter notes: G2, A2, B2, C3, D3, E3, F#3, G#3, A3, B3, C4, D4, E4, F#4, G4, A4, B4, C5.

60

Musical staff 60, bass clef, key signature of three sharps. The staff begins with a fermata over a half note G2, followed by a dynamic marking *p*. The melody consists of quarter notes: G2, A2, B2, C3, D3, E3, F#3, G#3, A3, B3, C4, D4, E4, F#4, G4, A4, B4, C5.

64

21

Musical staff 64, bass clef, key signature of three sharps. The staff begins with a fermata over a half note G2, followed by a dynamic marking *p*. The melody consists of quarter notes: G2, A2, B2, C3, D3, E3, F#3, G#3, A3, B3, C4, D4, E4, F#4, G4, A4, B4, C5.

68

Musical staff 68, bass clef, key signature of three sharps. The staff begins with a fermata over a half note G2, followed by a dynamic marking *p*. The melody consists of quarter notes: G2, A2, B2, C3, D3, E3, F#3, G#3, A3, B3, C4, D4, E4, F#4, G4, A4, B4, C5.

72

Musical staff 72, bass clef, key signature of three sharps. The staff begins with a fermata over a half note G2, followed by a dynamic marking *p*. The melody consists of quarter notes: G2, A2, B2, C3, D3, E3, F#3, G#3, A3, B3, C4, D4, E4, F#4, G4, A4, B4, C5.

76

Musical staff 76, bass clef, key signature of three sharps. The staff begins with a fermata over a half note G2, followed by a dynamic marking *p*. The melody consists of quarter notes: G2, A2, B2, C3, D3, E3, F#3, G#3, A3, B3, C4, D4, E4, F#4, G4, A4, B4, C5.

80

Musical staff 80, bass clef, key signature of three sharps. The staff begins with a fermata over a half note G2, followed by a dynamic marking *p*. The melody consists of quarter notes: G2, A2, B2, C3, D3, E3, F#3, G#3, A3, B3, C4, D4, E4, F#4, G4, A4, B4, C5.

84

22

Musical staff 84, bass clef, key signature of three sharps. The staff begins with a fermata over a half note G2, followed by a dynamic marking *p*. The melody consists of quarter notes: G2, A2, B2, C3, D3, E3, F#3, G#3, A3, B3, C4, D4, E4, F#4, G4, A4, B4, C5.

88

Musical staff 88, bass clef, key signature of three sharps. The staff begins with a fermata over a half note G2, followed by a dynamic marking *p*. The melody consists of quarter notes: G2, A2, B2, C3, D3, E3, F#3, G#3, A3, B3, C4, D4, E4, F#4, G4, A4, B4, C5.

92

Musical staff 92, bass clef, key signature of three sharps. The staff begins with a fermata over a half note G2, followed by a dynamic marking *p*. The melody consists of quarter notes: G2, A2, B2, C3, D3, E3, F#3, G#3, A3, B3, C4, D4, E4, F#4, G4, A4, B4, C5.

96

Musical staff 96, bass clef, key signature of three sharps. The staff begins with a fermata over a half note G2, followed by a dynamic marking *p*. The melody consists of quarter notes: G2, A2, B2, C3, D3, E3, F#3, G#3, A3, B3, C4, D4, E4, F#4, G4, A4, B4, C5.

100

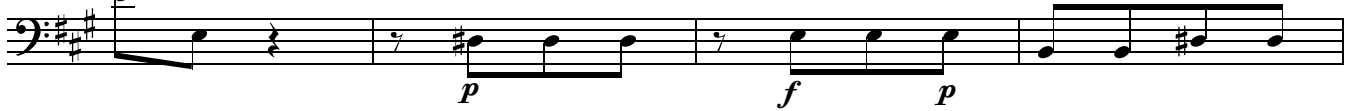


104

23



108



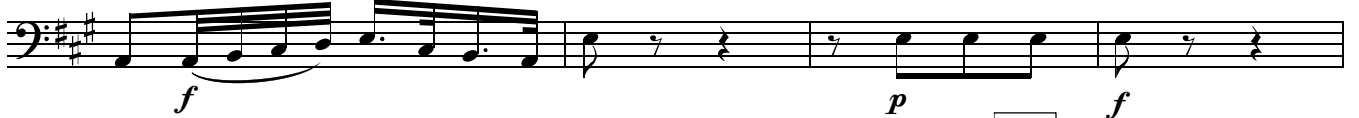
112



116



120



124

24



128



132



136



140



144



## 6. Deposuit potentes

Allegretto

*f*

5

9

13

17

21

25

29

33

37

41

45

22

23

3

3

3

3

3

3

3

3

3

3

3

49 24

*f*

53

57

61

65

69 25

73

77

81

85

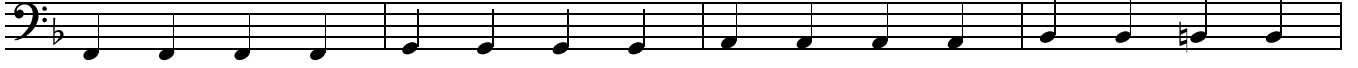
89 26

93

97



27



106



110



114



118



122



126



130



134

28



138



142



146



150



154



158

29



162

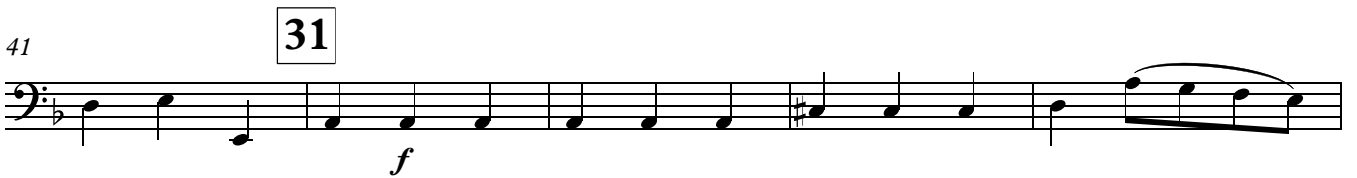
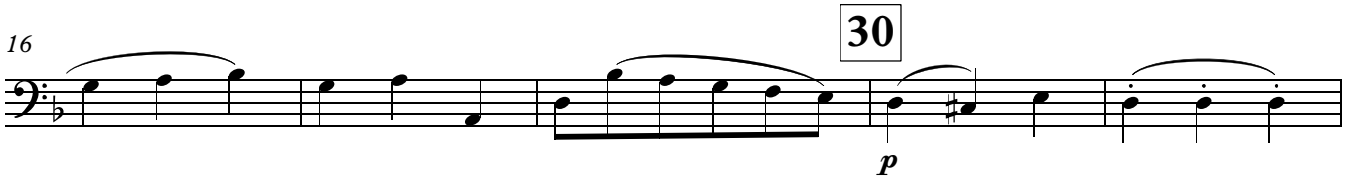
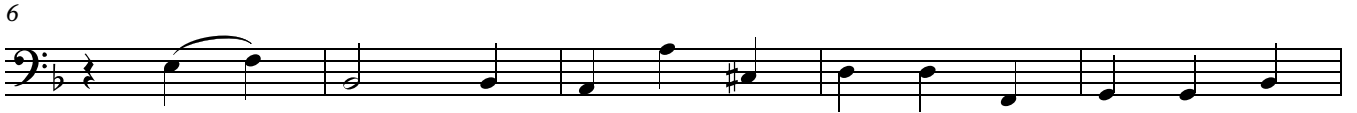


167



# 7. Suscepit Israel

Andante  
con sord.





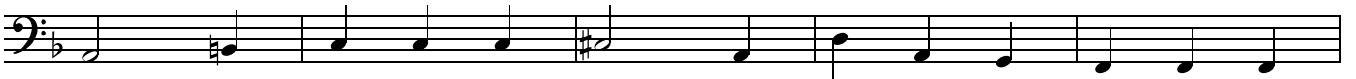
56



61



66



71



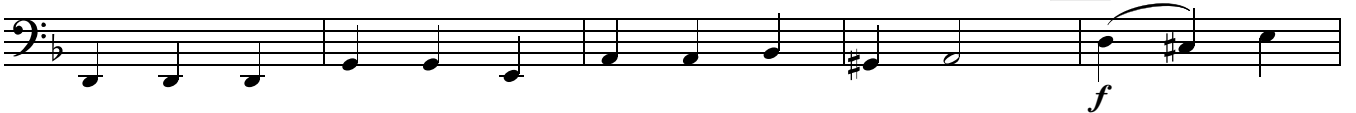
76



81



86



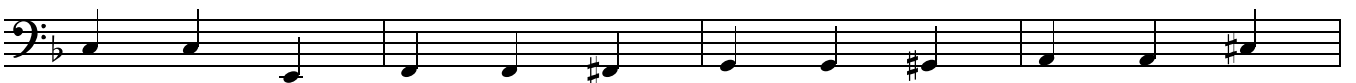
91



96



100



104



## 8. Gloria

**Allegro molto**



**34**



28



31



34



37

35



40



43



46



**Largo**

49



51



## 9. Sicut erat

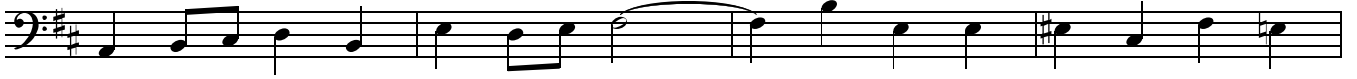
Moderato, alla breve

The image shows a musical score for the cello part of the Magnificat by C.P.E. Bach, specifically the section 'Sicut erat'. The score is written in bass clef with a key signature of two sharps (F# and C#) and a common time signature (C). The tempo and style are 'Moderato, alla breve'. The score consists of ten staves of music, each starting with a measure number: 1, 5, 9, 13, 17, 21, 25, 29, 33, and 37. The first staff begins with a dynamic marking of *f* (forte). A box containing the number '36' is placed above the sixth measure of the seventh staff. The music features a variety of rhythmic patterns, including eighth and sixteenth notes, and rests.

41



45



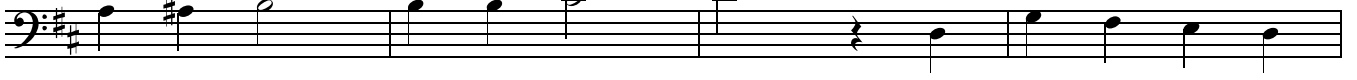
49



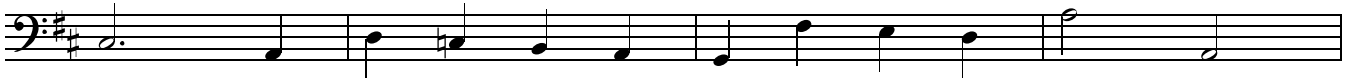
53



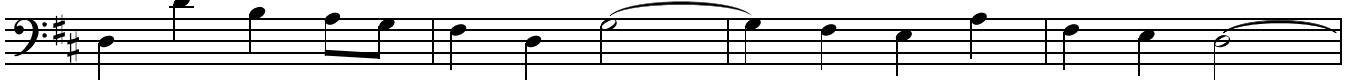
57



61



37



69



77



81



85

38



89



93



97



102



107



111



115



118



121





172

40



176



180



184



188



192



196



200



204

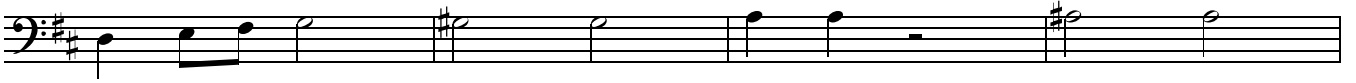


208

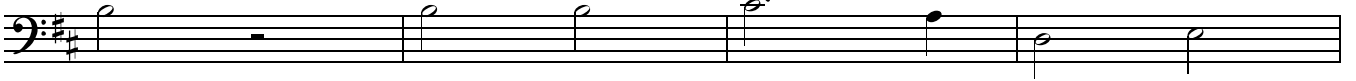




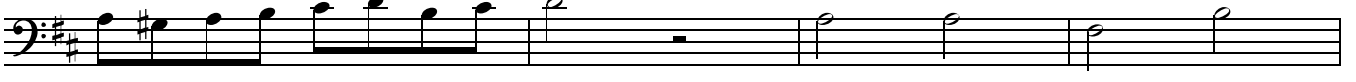
212



216



220



224



232



235



239



243

