

Flute 2

Carl Philipp Emanuel

BACH

MAGNIFICAT

1. Magnificat

Allegro

Carl Philipp Emanuel BACH
(1714-1788)

f

4

7 *tr*

11

14

17

20 **1**

23

26

29 *tr*

32

35

Musical score for Flute 2, measures 71-91. The score is in G major (one sharp) and 3/4 time. It consists of six staves of music. Measure 75 contains a triplet of eighth notes. Measure 78 has a fermata over a whole note. Measure 81 has a fermata over a half note. Measure 84 has a fermata over a whole note. Measure 91 ends with a double bar line.

2. Quia respexit

Andante

TACET

Musical staff for '2. Quia respexit'. The staff is in G major (one sharp) and 3/4 time. It is a single staff with a double bar line at the end, indicating a tacet section.

3. Quia fecit

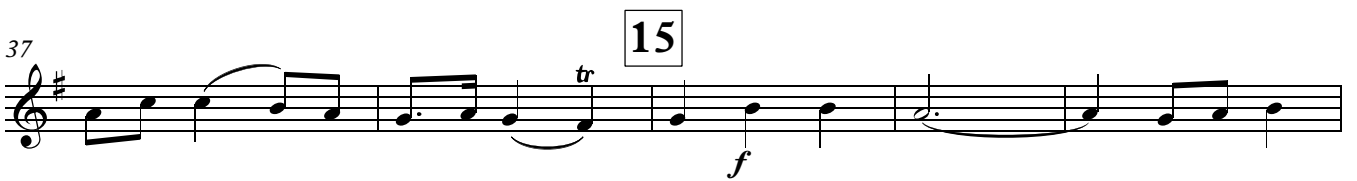
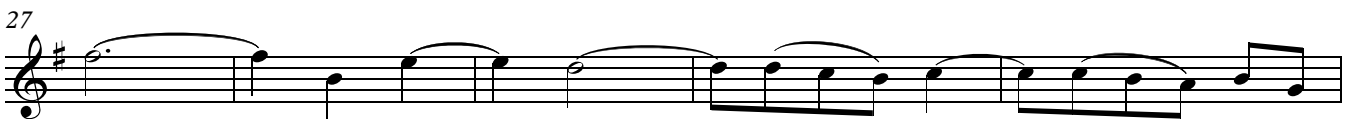
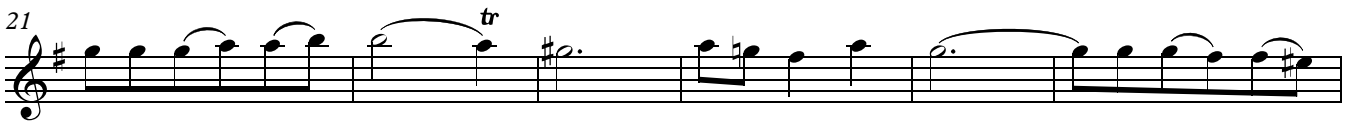
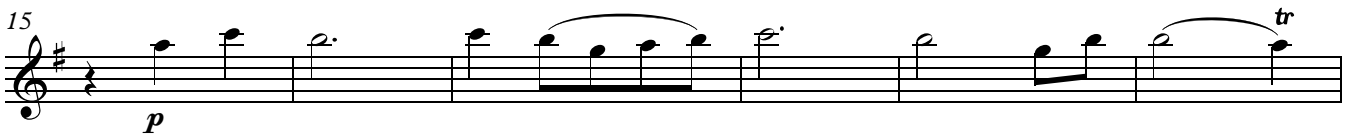
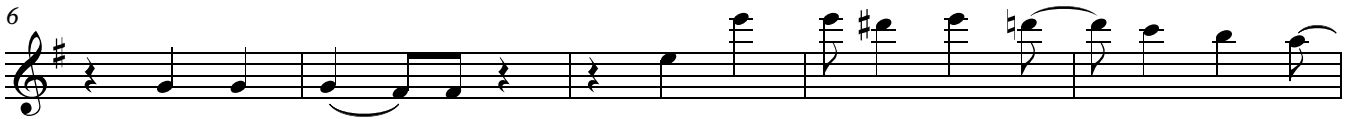
Allegro assai

TACET

Musical staff for '3. Quia fecit'. The staff is in G major (one sharp) and common time (C). It is a single staff with a double bar line at the end, indicating a tacet section.

4. Et misericordia ejus

Andantino



91

98

103

108

112

117

122

5. Fecit potentiam

Allegro

TACET

6. Deposuit potentes

Allegretto

101

70

7. Suscepit Israel

Andante

f

6

11

16 *tr* **30** *p*

21

27 *tr*

32

37 *tr* **31** *f*

43 *tr* *p*

48

C.Ph.E.Bach. Magnificat
Flute 2

53 *tr*

58

64

69 **32** *tr*

75 *tr*

80

85 *tr*

33 *f*

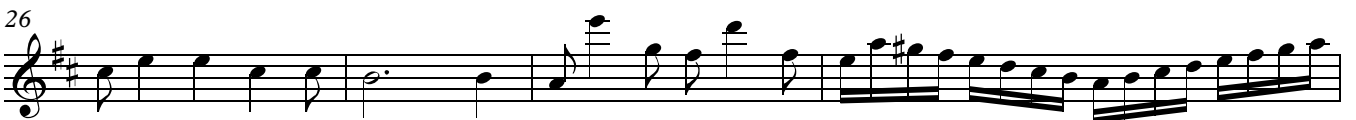
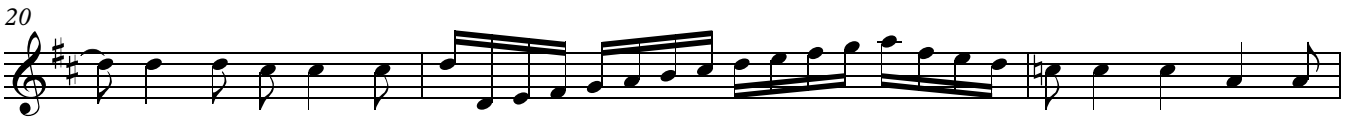
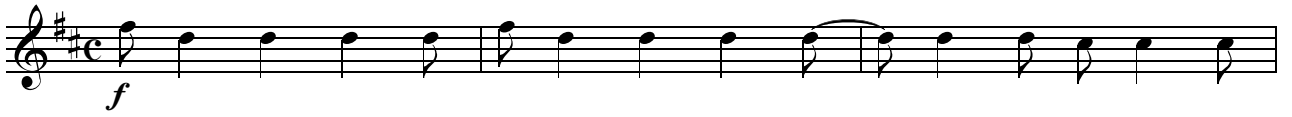
96

100

104 *tr*

8. Gloria

Allegro molto



30

34

35

41

44

47

49 **Largo**

9. Sicut erat

Moderato, alla breve

4

f

8

13

18

23

36

30

36

41

47

52

2

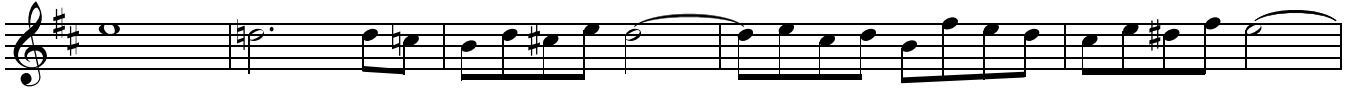
99



104



109



114

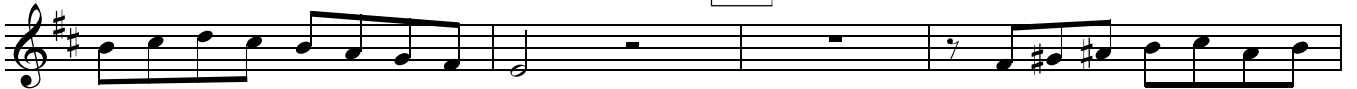


118



123

39



127



132



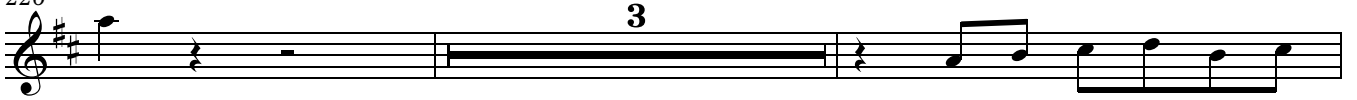
137



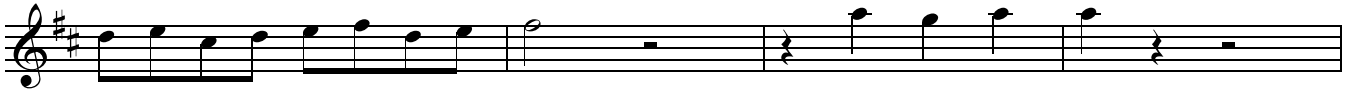
41



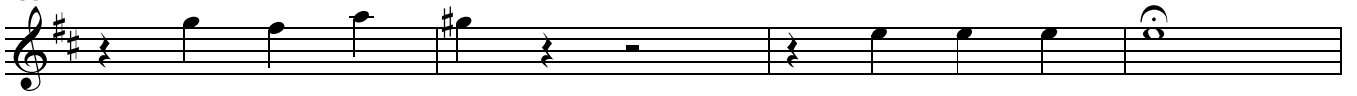
226



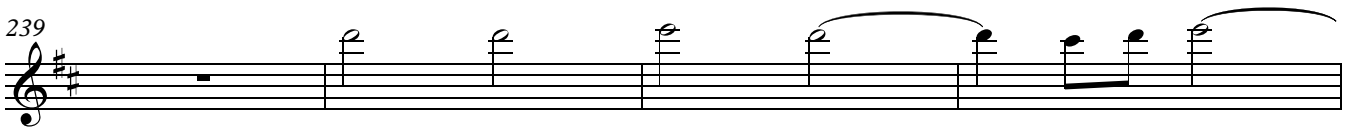
231



235



239



243

